

Burnaby Refinery  
Community Advisory Panel (CAP)  
Seep Update

January 26, 2012

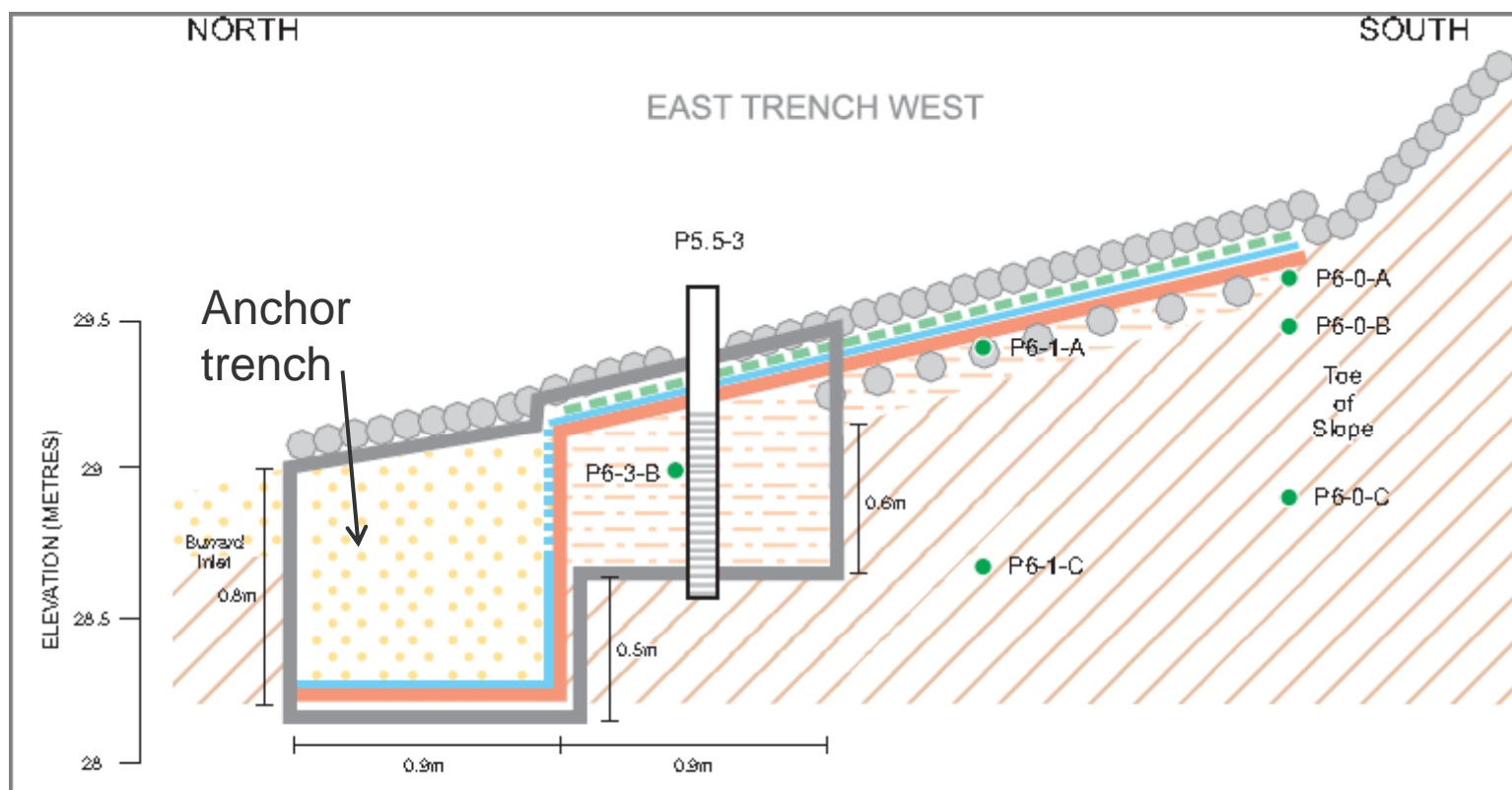




# Foreshore Updates – Interim Remedial Action

Interim Remedial Action ([IRA](#)) barrier

- The barrier, comprised of the sand-organoclay mixture covered by the mat, is performing as designed by capturing and containing seep material
- Some seep material was found just outside the barrier in the anchor trench; plans to address this are now under way



# Foreshore Updates – Detailed Site Investigation



The Detailed Site Investigation (DSI) Report was posted to the CAP website, Monday January 23, 2012.

## **Objective of DSI:**

- to delineate hydrocarbon and other potential compounds

## **How:**

- by taking samples and comparing the analyses against standards or a reference sample

# Foreshore Updates – Detailed Site Investigation

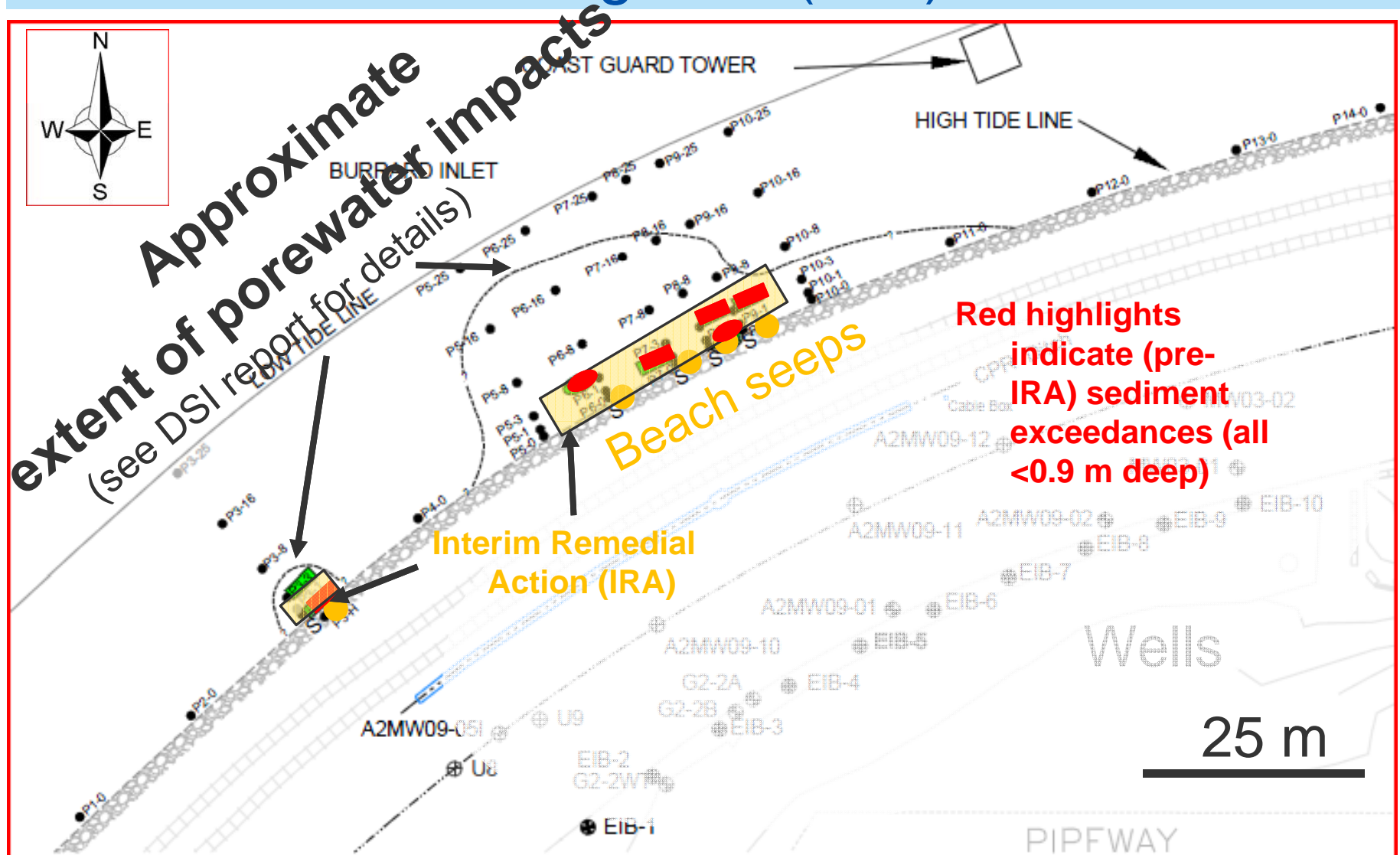


## Conclusions:

- the nature and extent of potential impacts in the foreshore area are considered to be effectively delineated
- the standards for some hydrocarbons and some metals were exceeded in some samples (sediment, as well as pore, ground and sea water samples)
- some compounds, such as metals need more study
- monitoring is ongoing and likely to last for several years

The full DSI report and an interpretive factsheet have been posted to the CAP website

# Summary of Detailed Site Investigation (DSI)



# Foreshore Updates – Risk Assessments



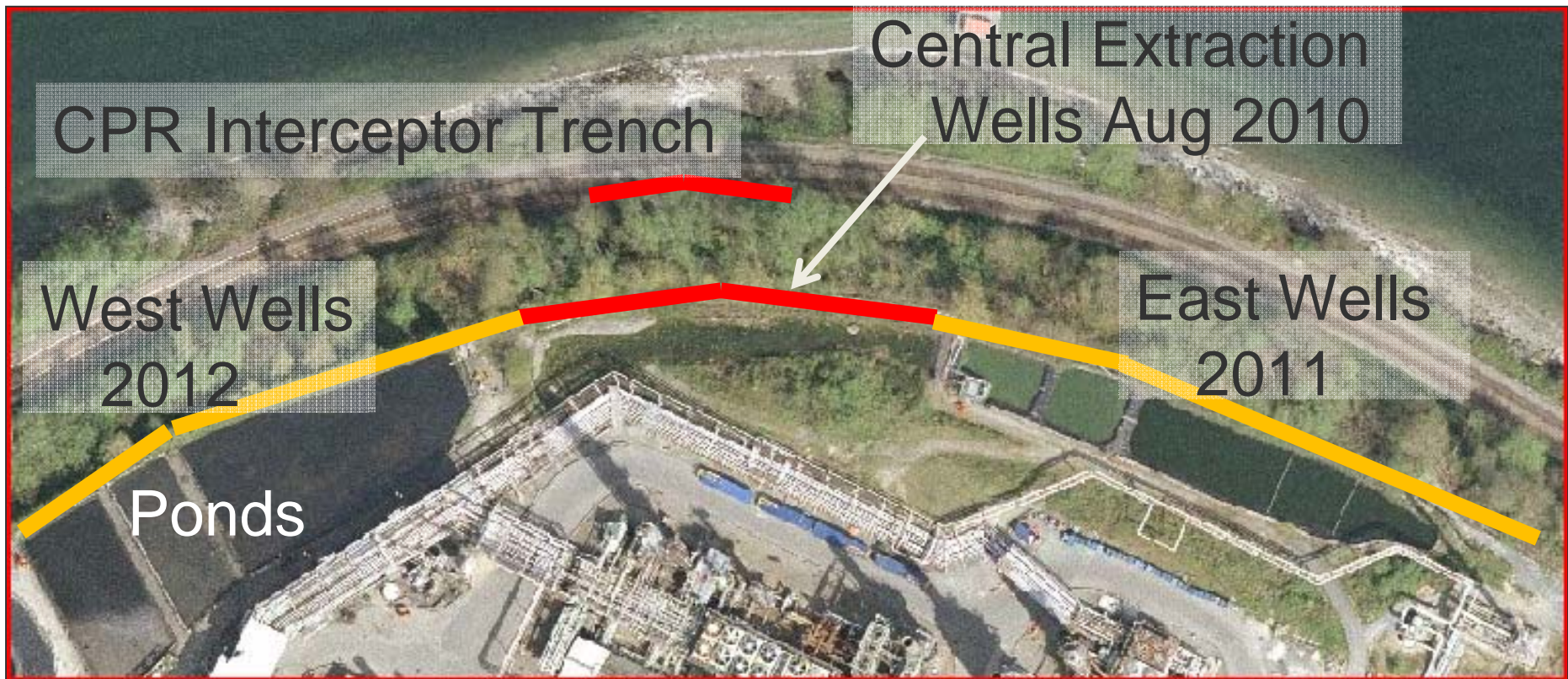
Human Health and Ecological Risk Assessments Problem Formulation reports have been submitted to the regulators

Problem formulation is the first step in a risk assessment. It looks at chemical analyses together with who or what might be exposed to any concentrations and determines if further assessment is warranted.

These reports will be posted to the CAP website following completion of regulatory review and comment.



# Perimeter Extraction System



Expansion and testing continue during full operation. Expect performance results in summer 2012